

# METROLINK

Integrated Transport. Integrated Life.



Title  
Date

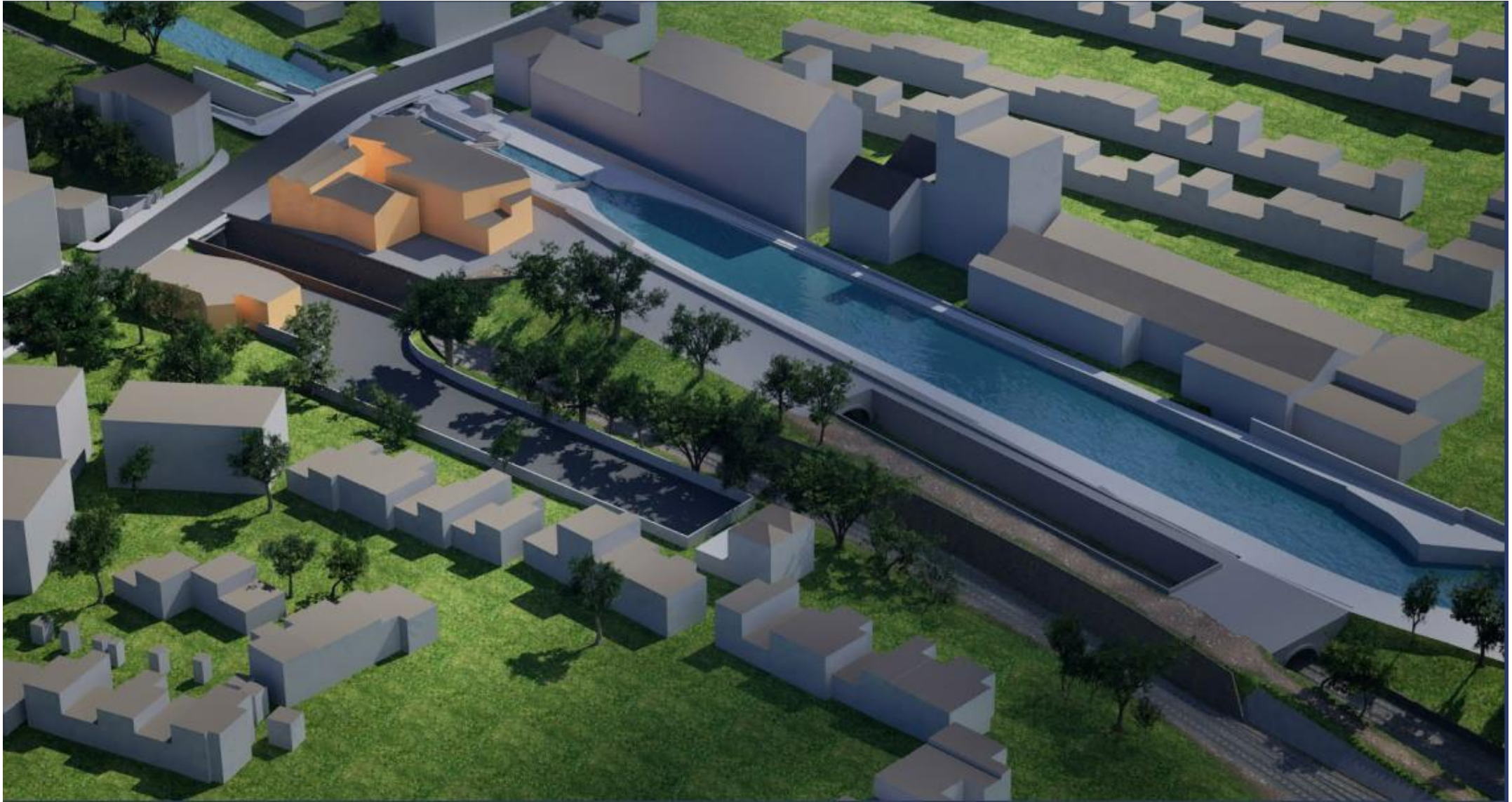


---

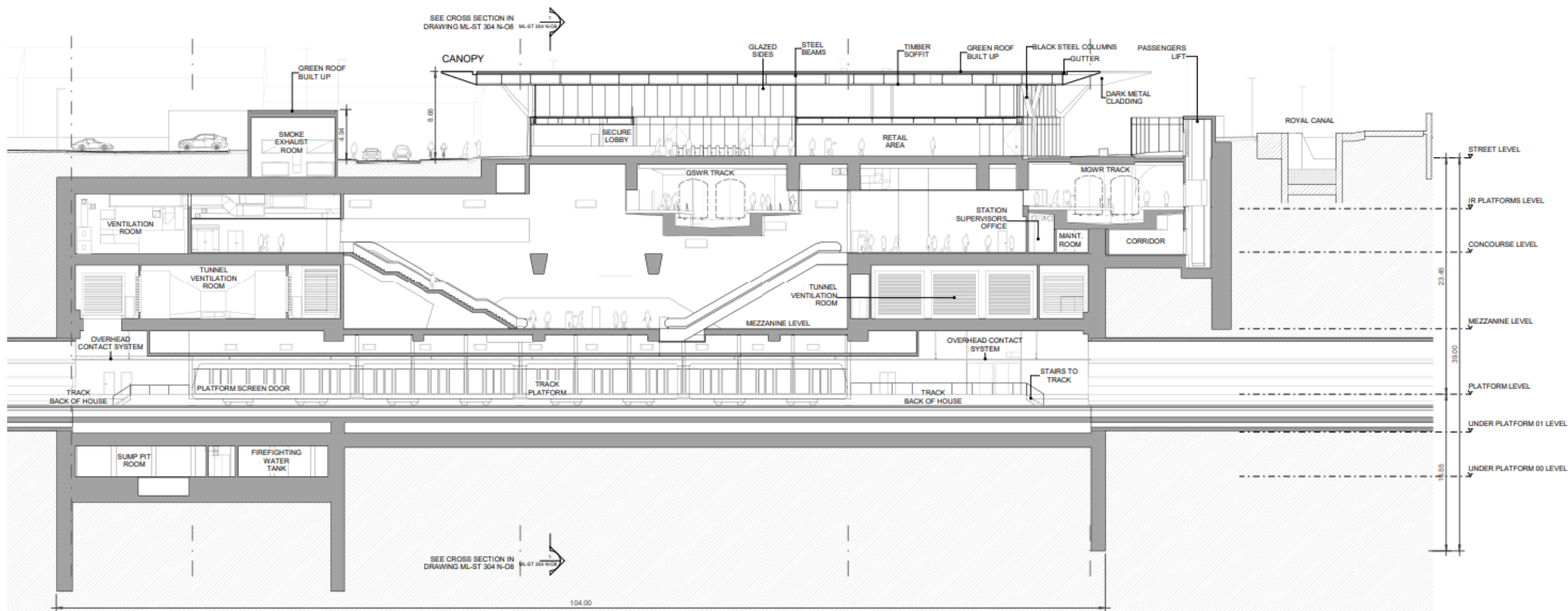
## Glasnevin Construction Sequence



# Setting

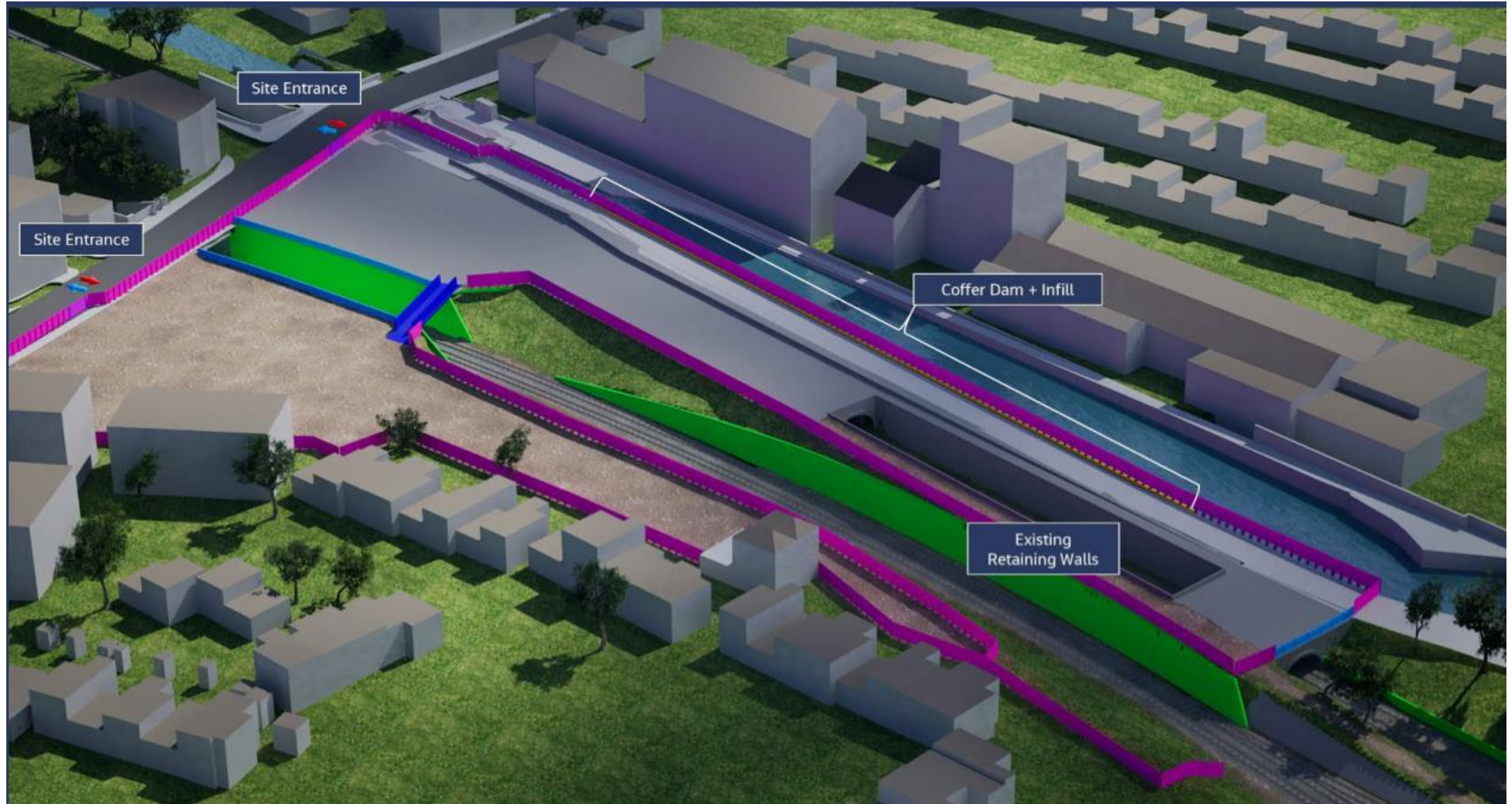


# Design





# Construction : Demolition and Site setup



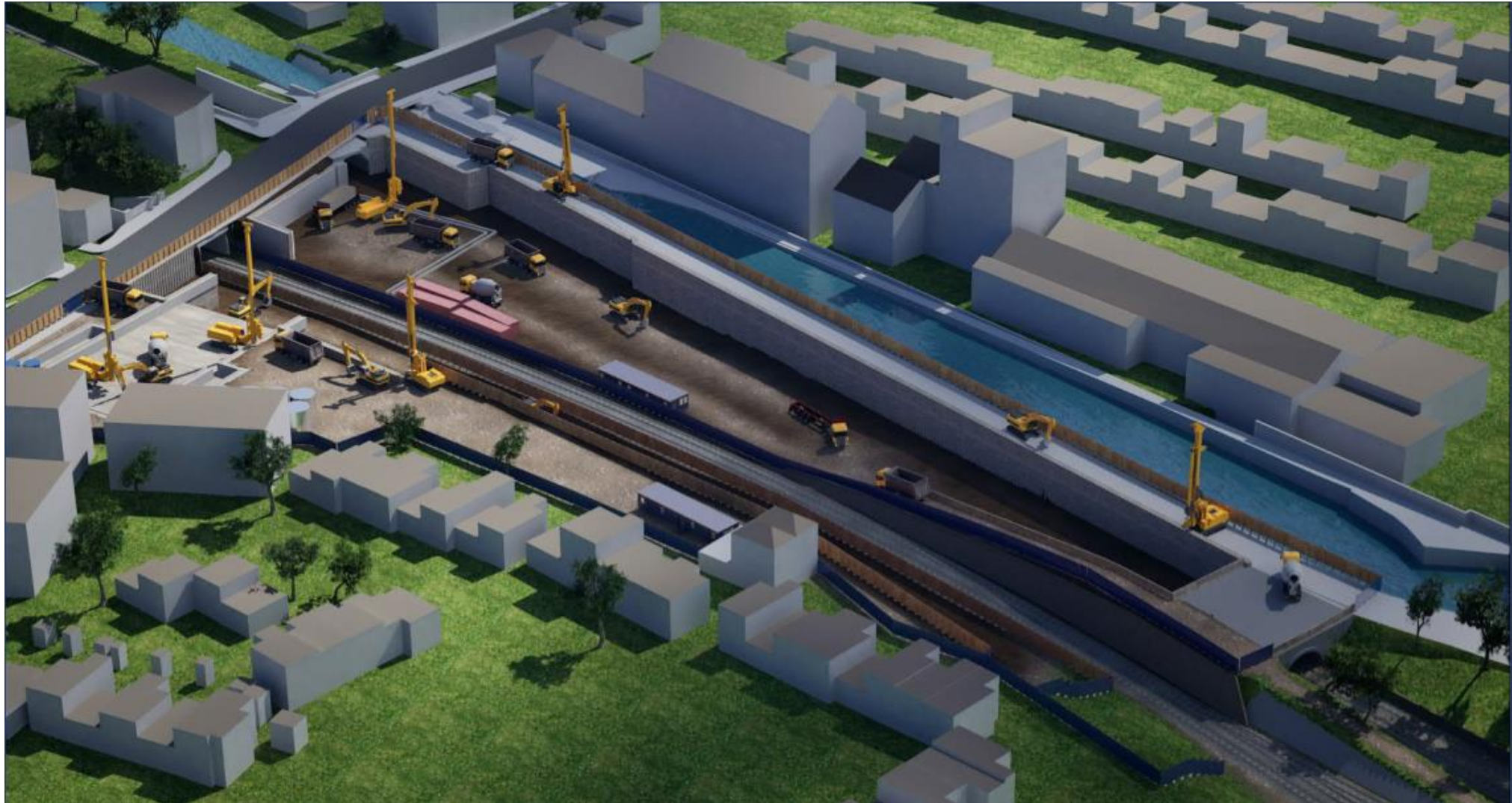


# Construction : MGWR Closure start





# Construction : MGWR Closure





# Construction : MGWR Closure Ends / GSWR Starts





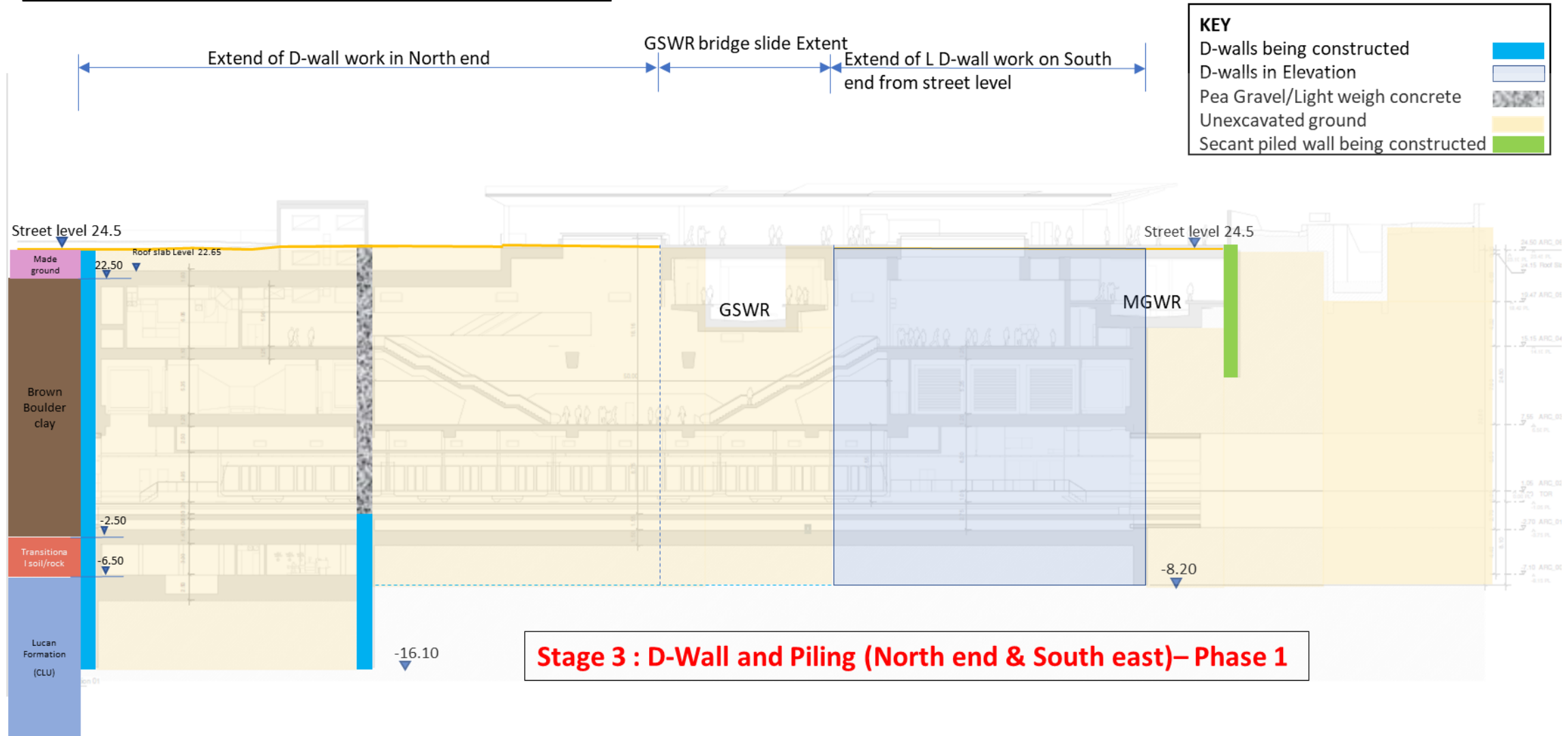
# Construction : Both Lines open







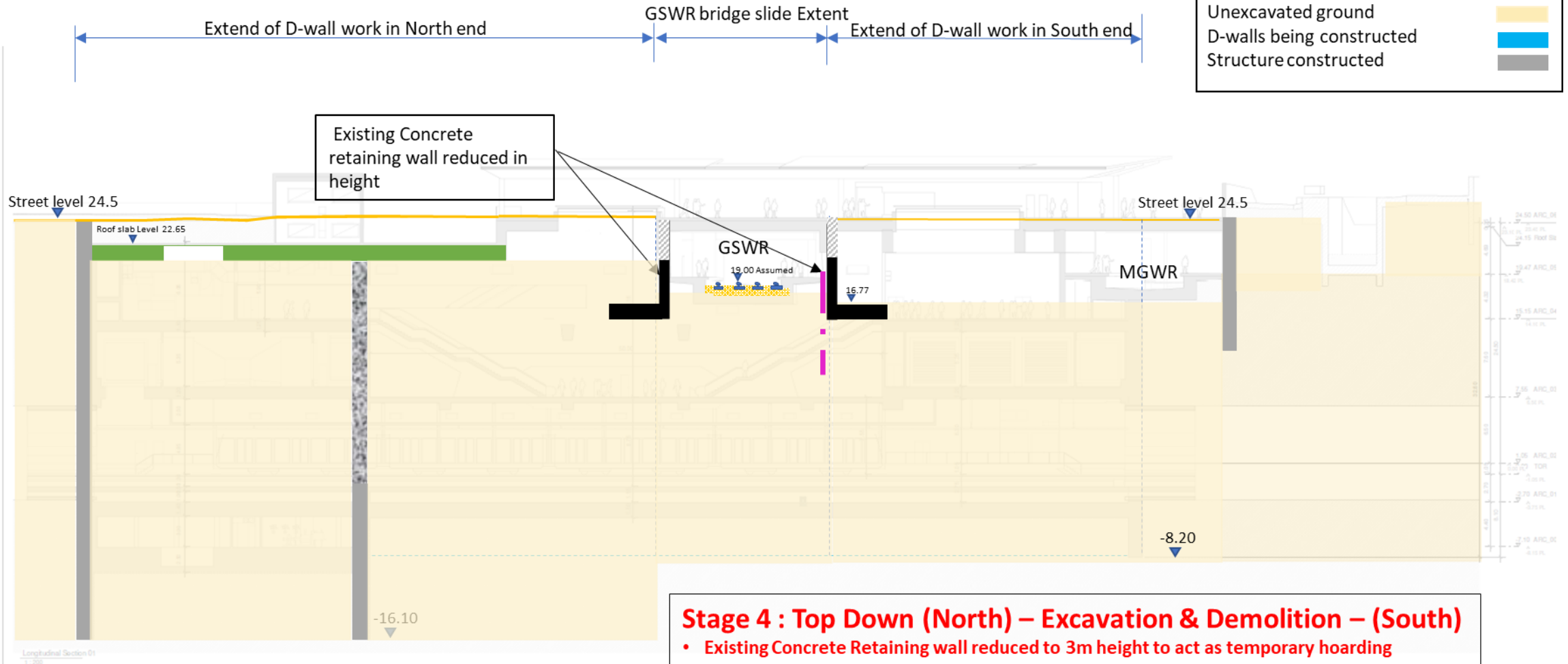
## Glasnevin Station- Construction Sequence







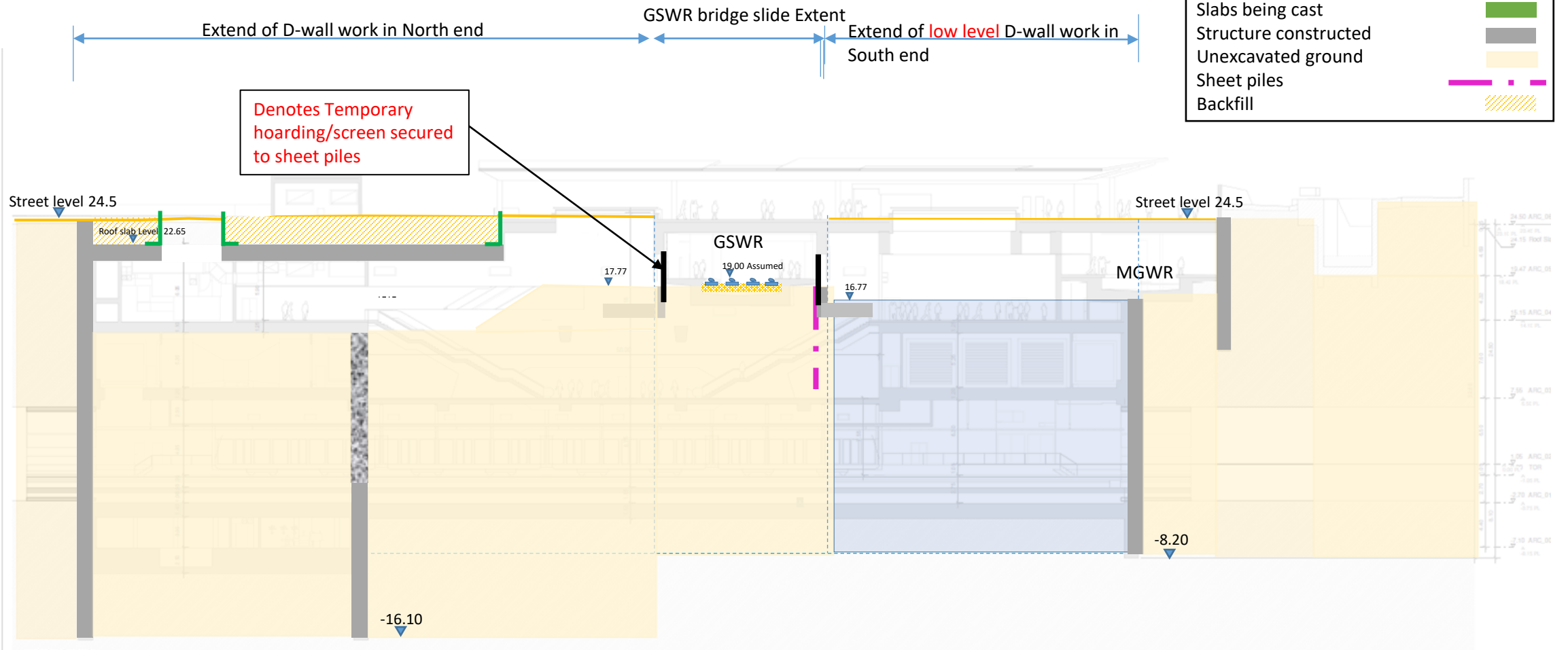
## Glasnevin Station- Construction Sequence







## Glasnevin Station- Construction Sequence

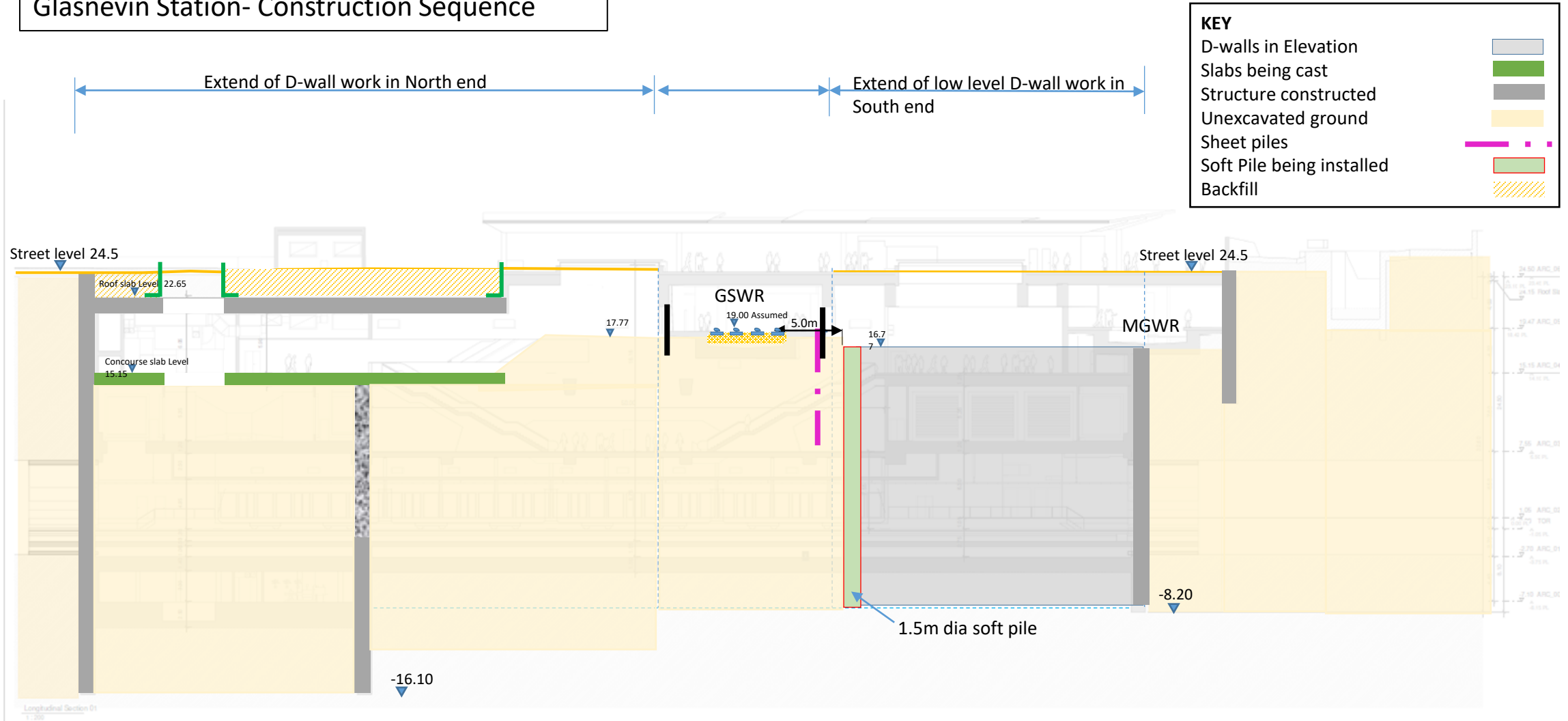


### Stage 5 : Continue Top Down (North)

- Existing retaining wall removed
- Start construction of D-Walls South end



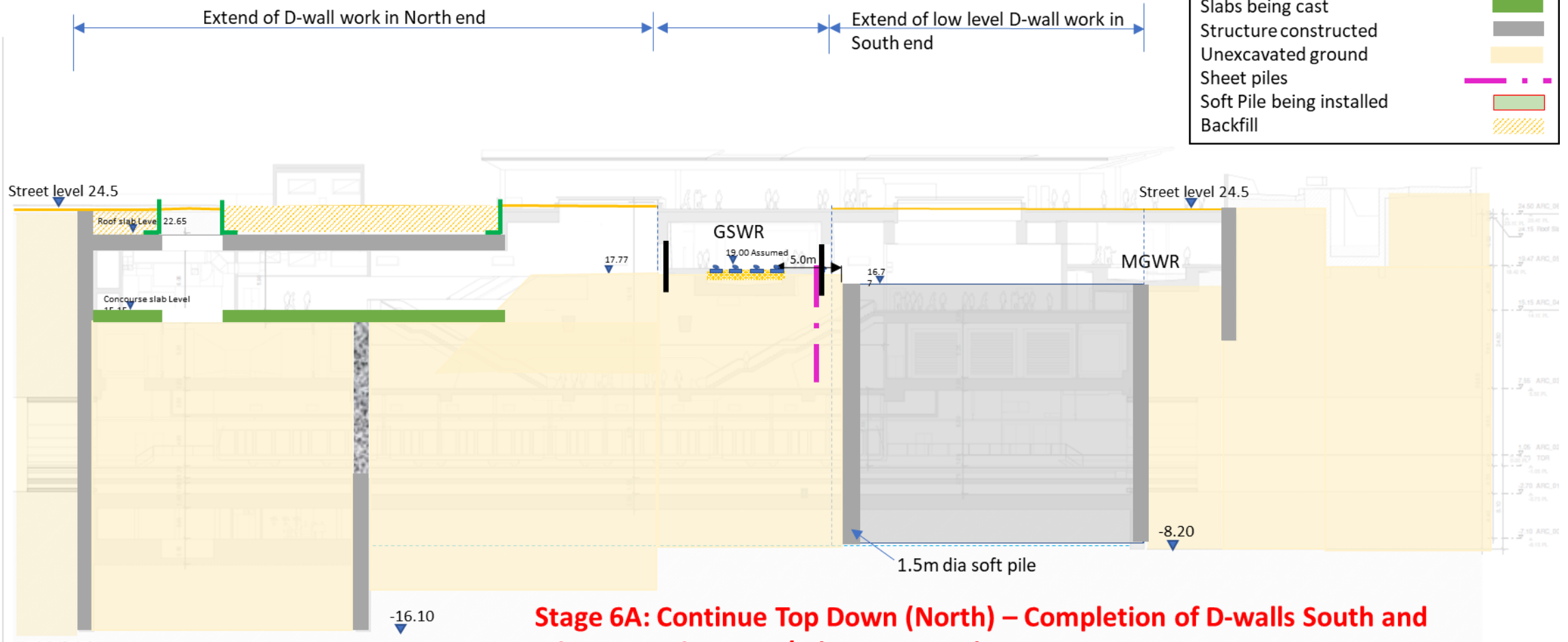
## Glasnevin Station- Construction Sequence







## Glasnevin Station- Construction Sequence



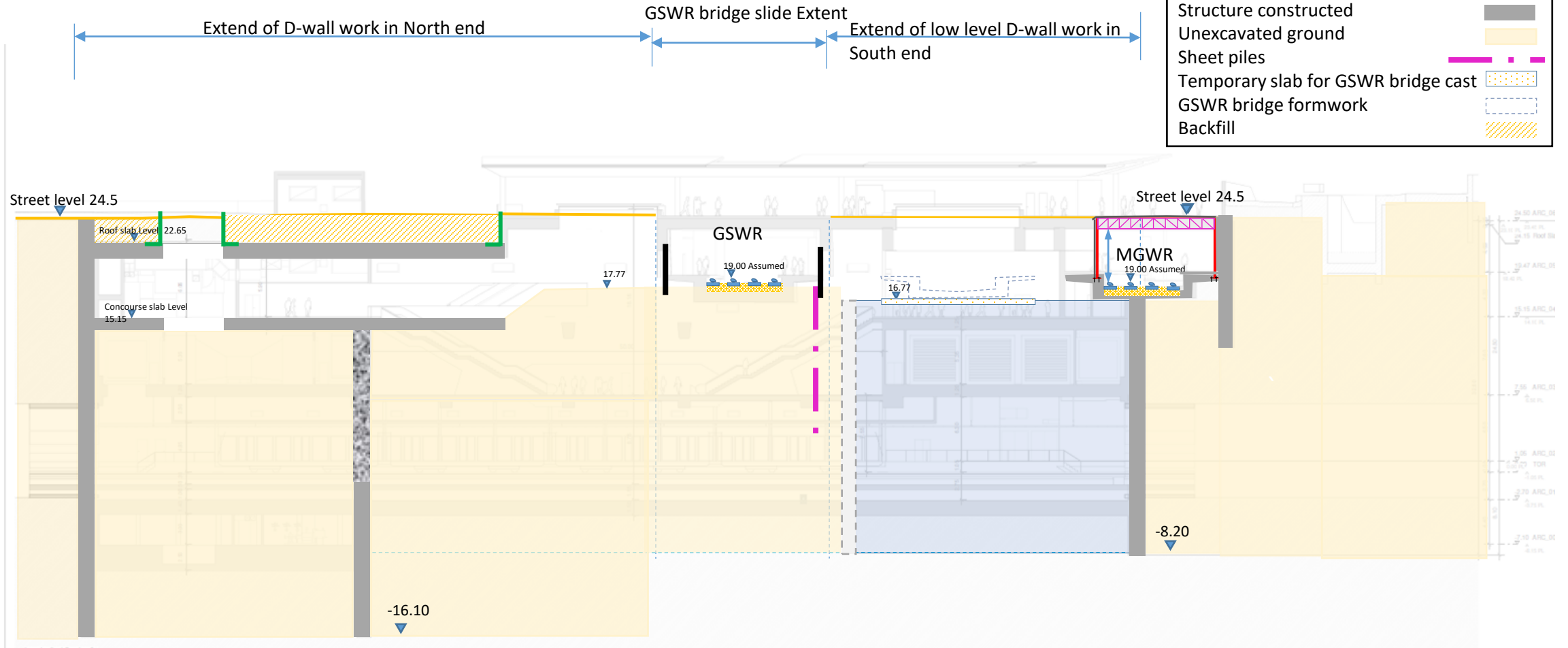
**Stage 6A: Continue Top Down (North) – Completion of D-walls South and Piling Interchange N/S (GSWR Open)**







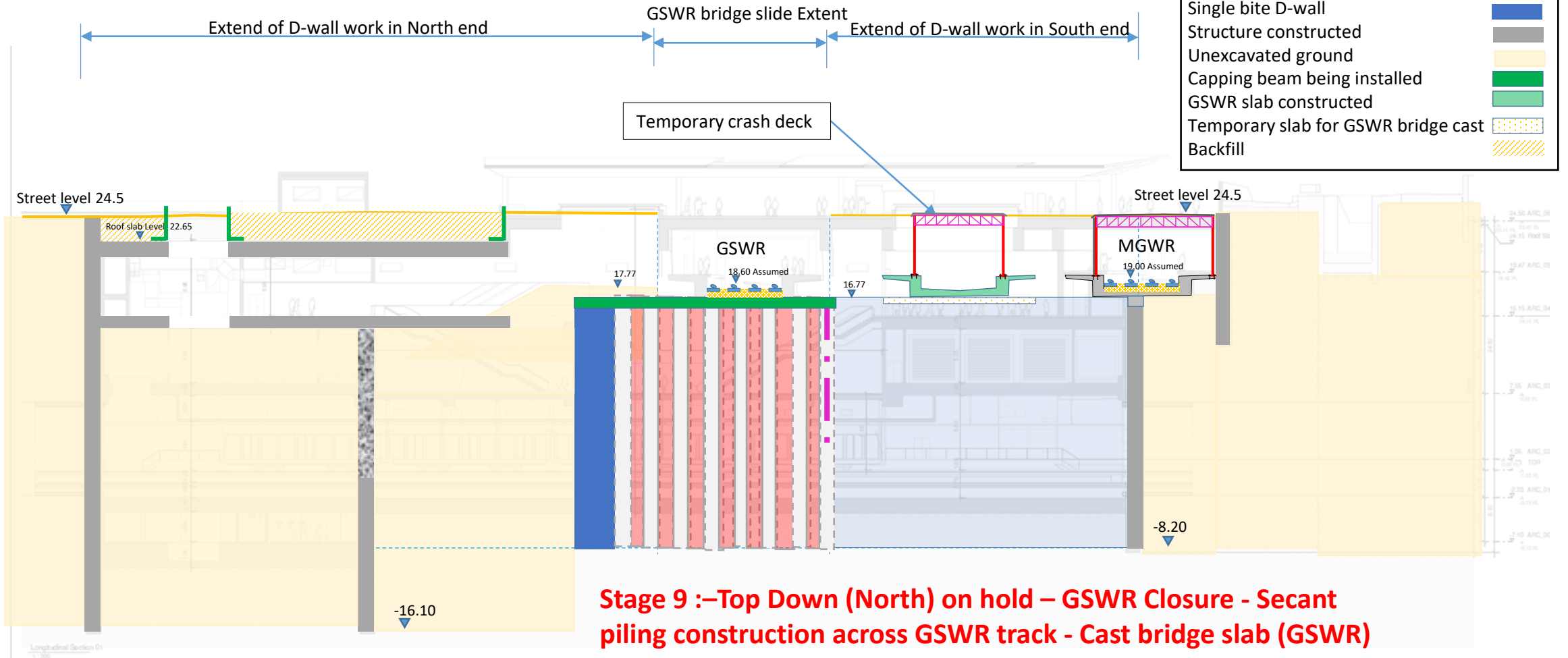
## Glasnevin Station- Construction Sequence



**Stage 8: Top Down (North) on hold.** Final track lowering to both MGWR lines. Commence GSWR bridge deck construction and prep works for Bridge Slide. Install formwork on Temporary slab



## Glasnevin Station- Construction Sequence

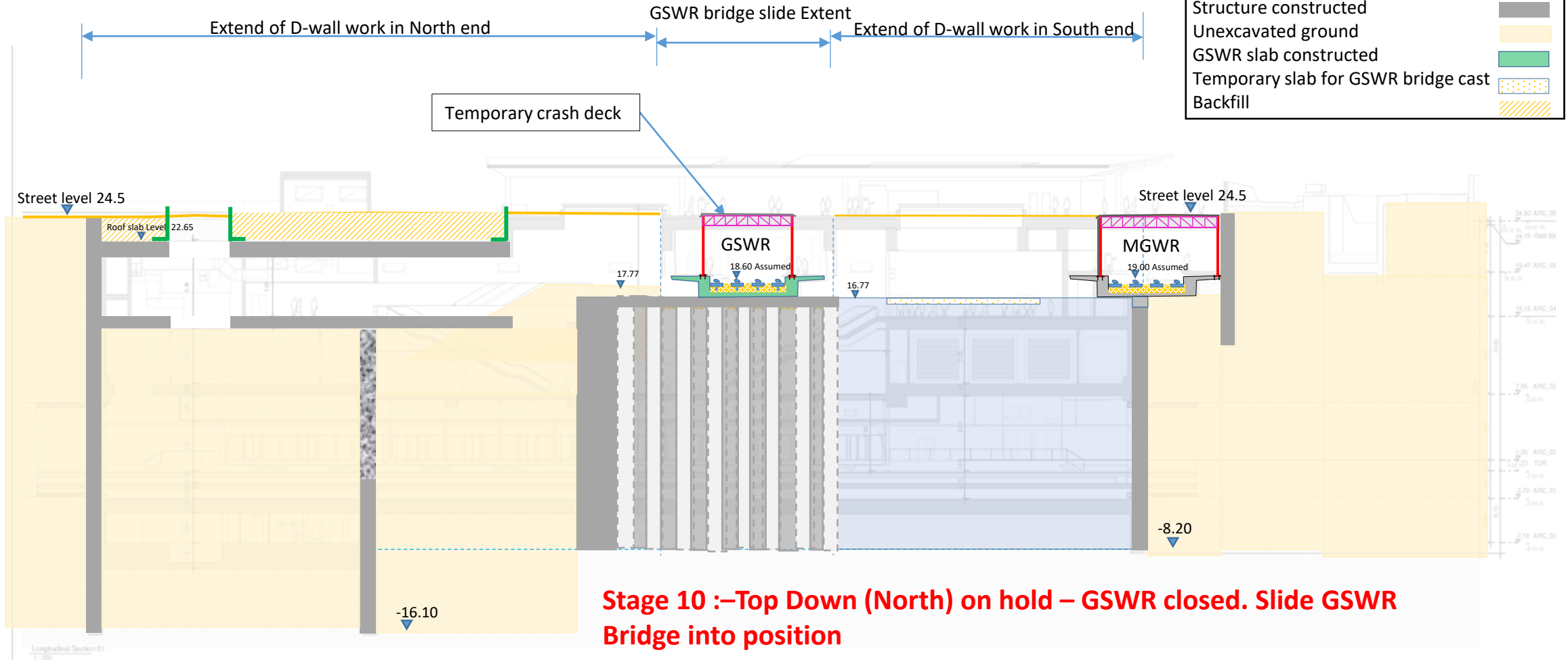


**Stage 9 :—Top Down (North) on hold – GSWR Closure - Secant piling construction across GSWR track - Cast bridge slab (GSWR) and prepare for Bridge Slide and Lower GSWR tracks to final level.**



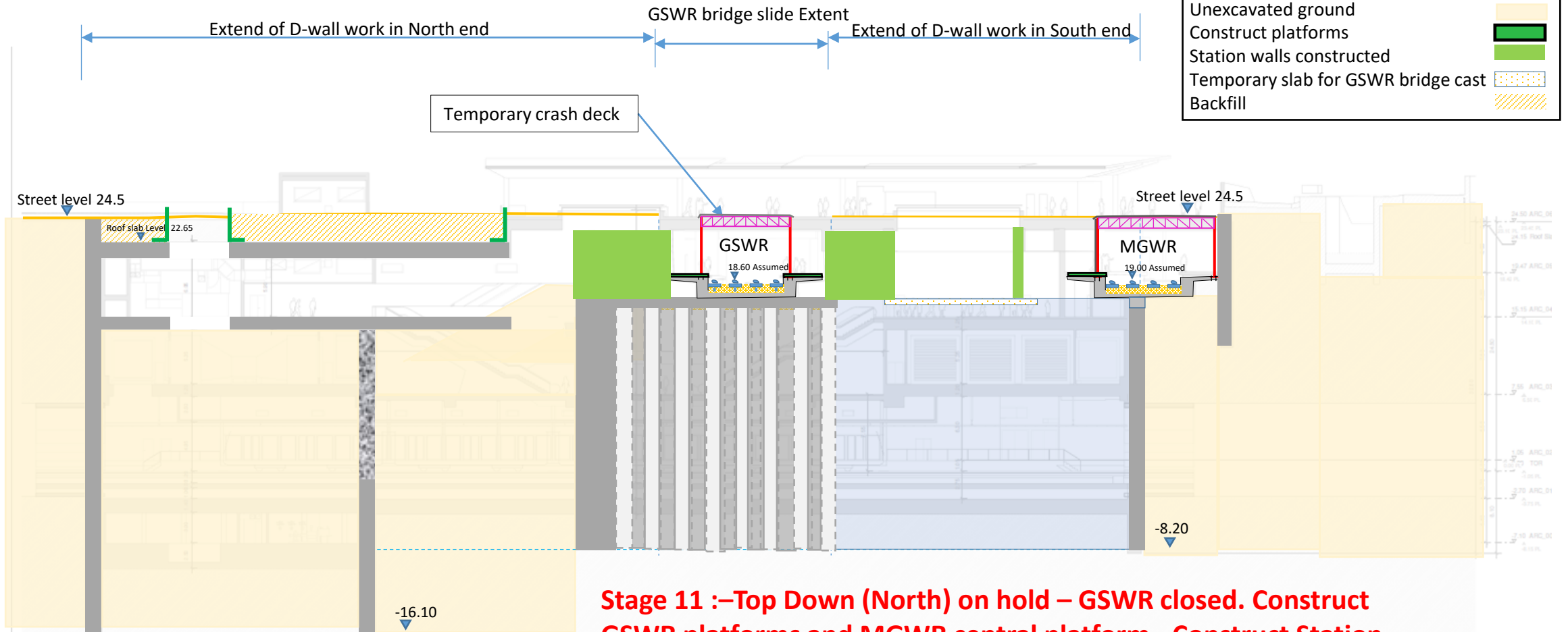


## Glasnevin Station- Construction Sequence





## Glasnevin Station- Construction Sequence

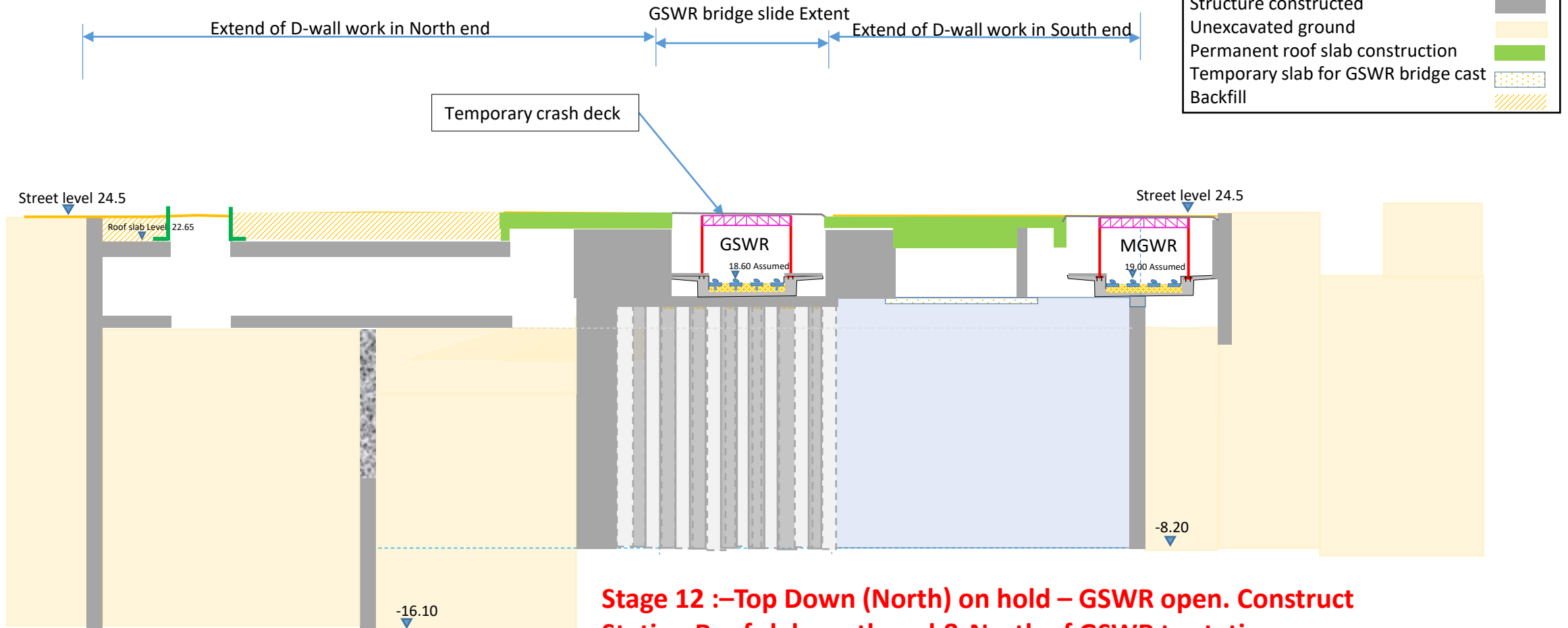


**Stage 11 :-Top Down (North) on hold – GSWR closed. Construct GSWR platforms and MGWR central platform - Construct Station walls & columns to u/s of roof slab**



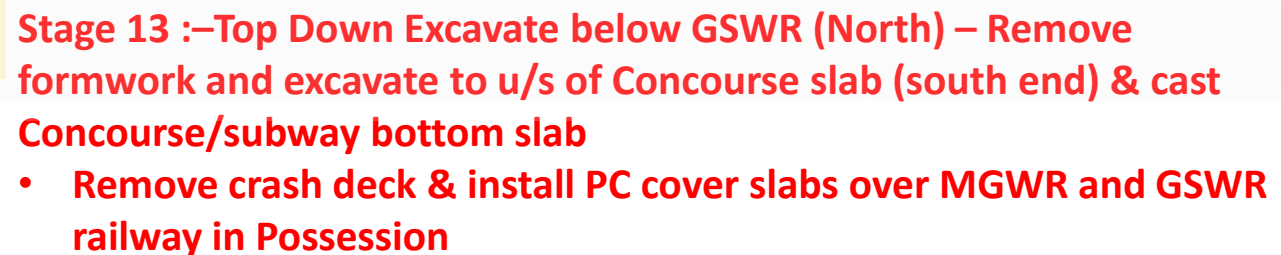


## Glasnevin Station- Construction Sequence



**Stage 12 :-Top Down (North) on hold – GSWR open. Construct Station Roof slab south end & North of GSWR to station**

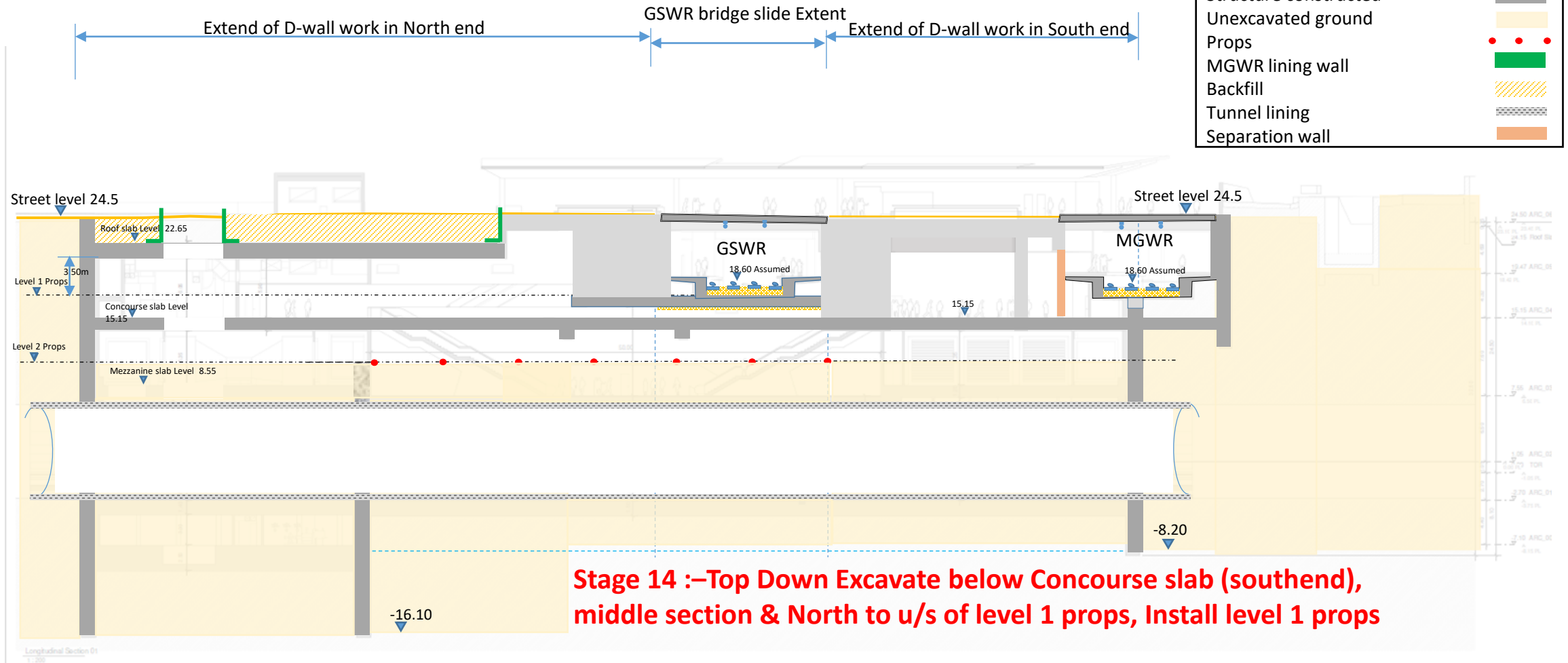
- Excavate subway to u/s of bottom slab





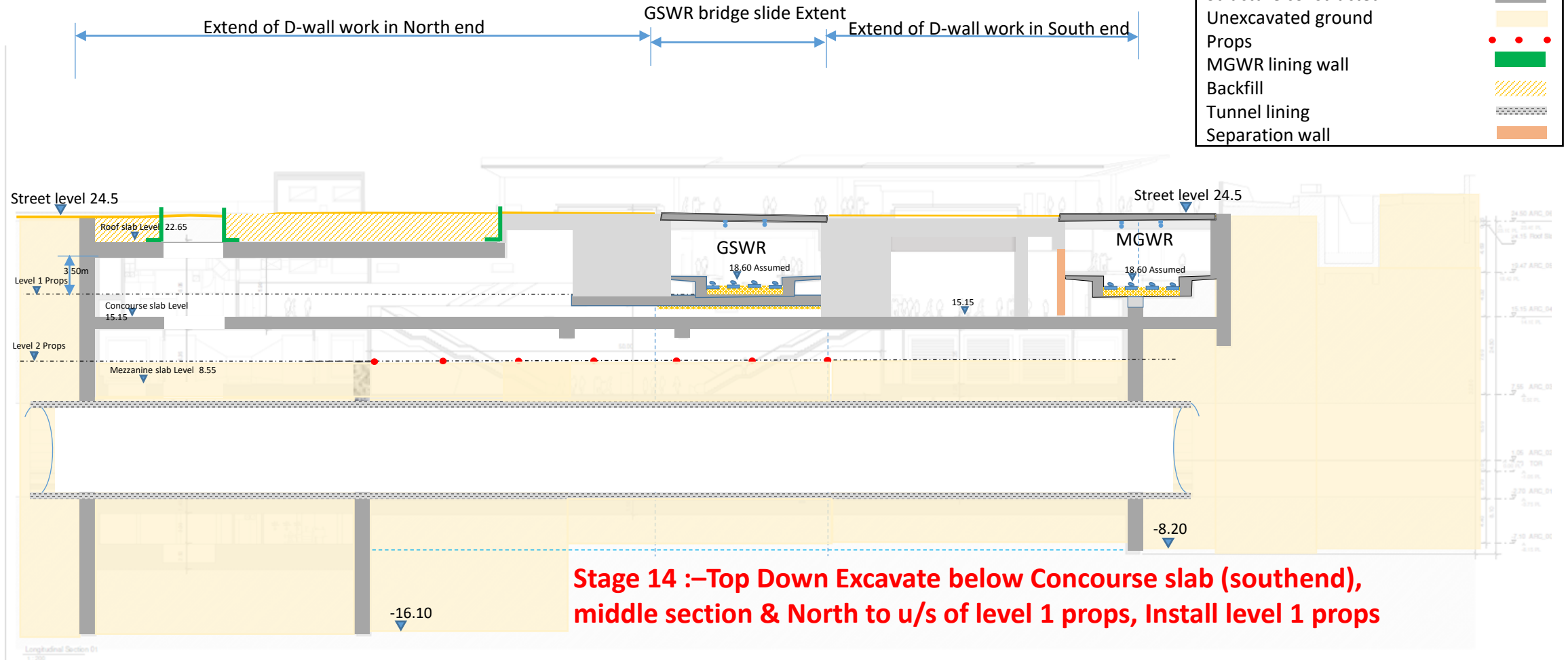


## Glasnevin Station- Construction Sequence





## Glasnevin Station- Construction Sequence

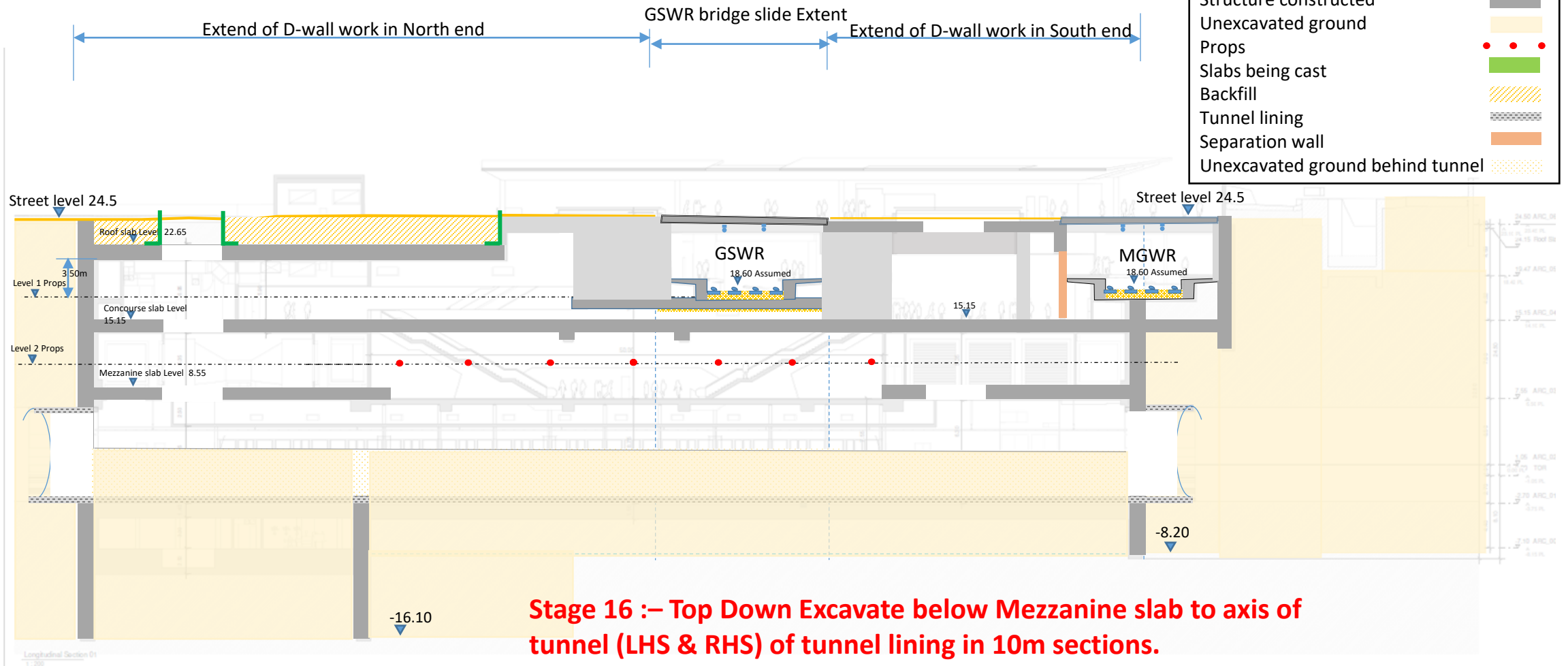






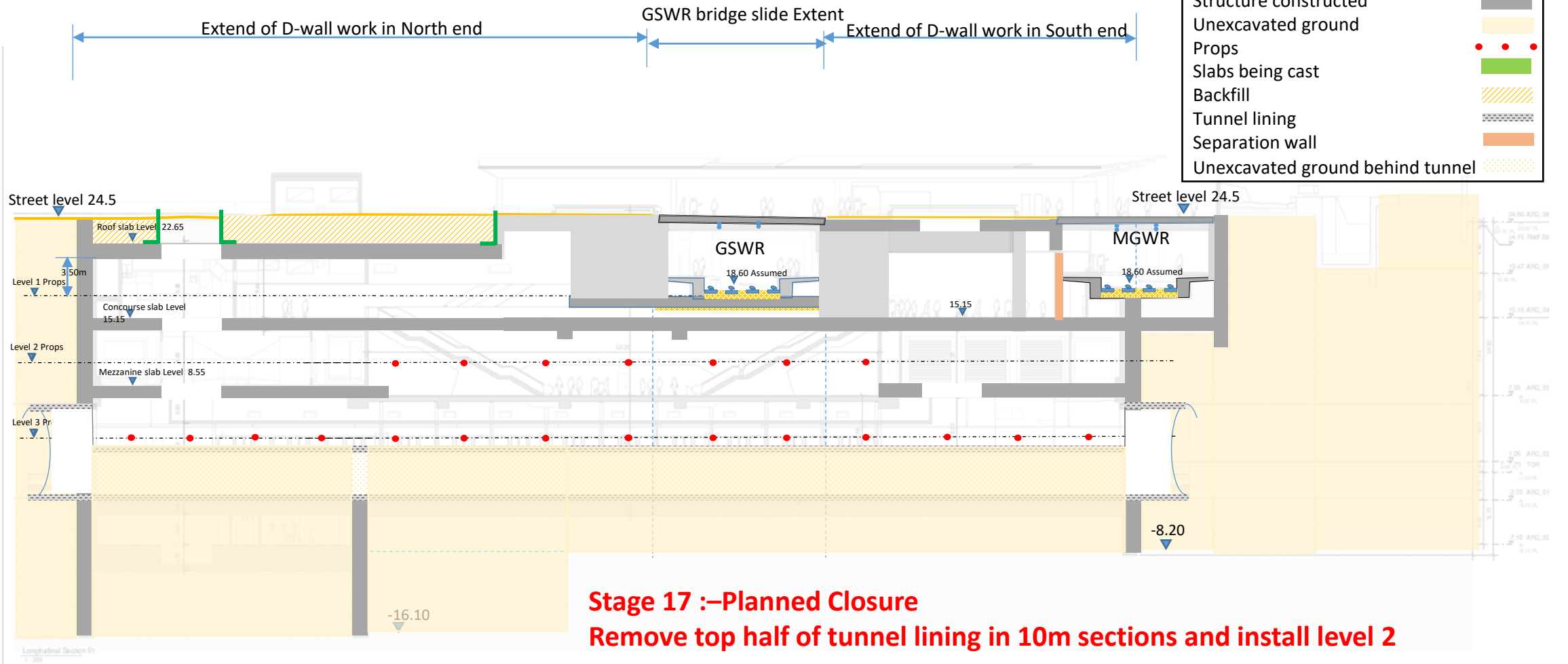
## Glasnevin Station- Construction Sequence-

### Start of Construction below Mezzanine floor from North end





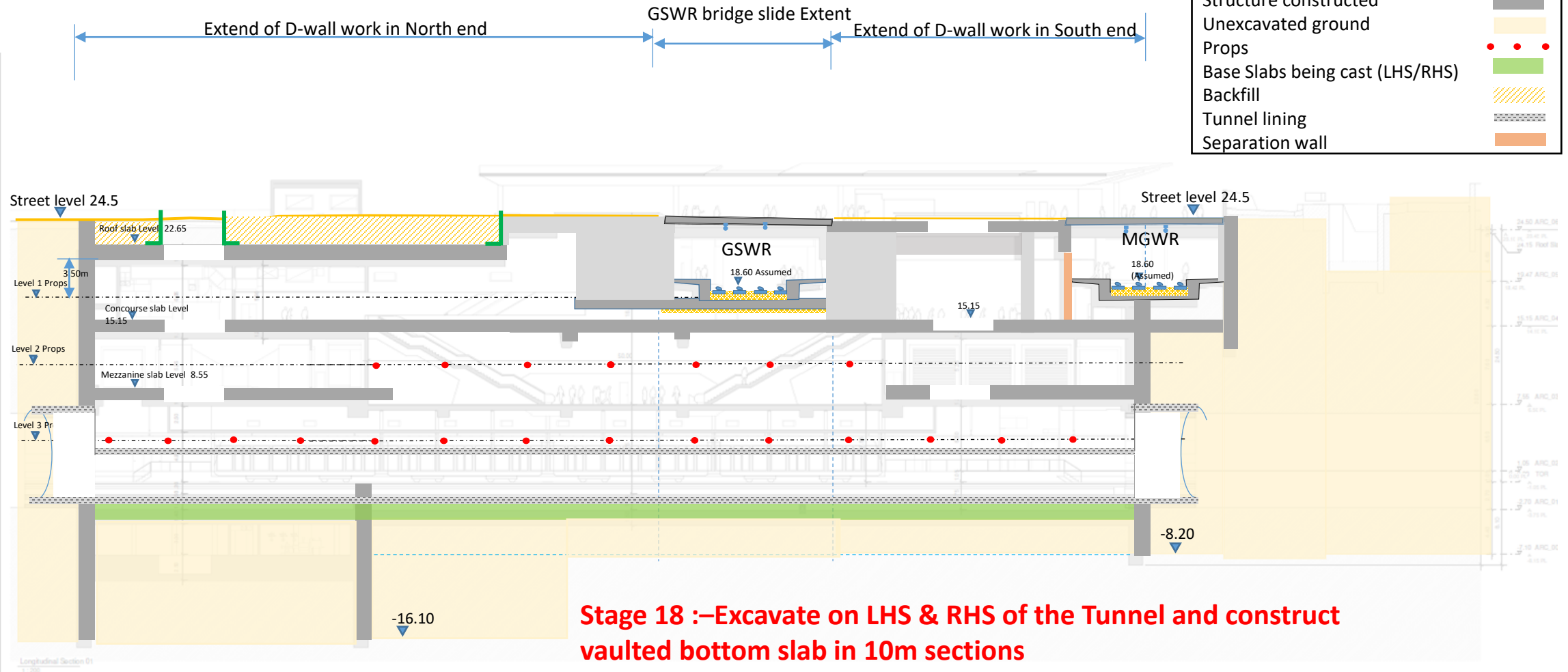
## Glasnevin Station- Construction Sequence



**Stage 17 :-Planned Closure**  
**Remove top half of tunnel lining in 10m sections and install level 2 props.**



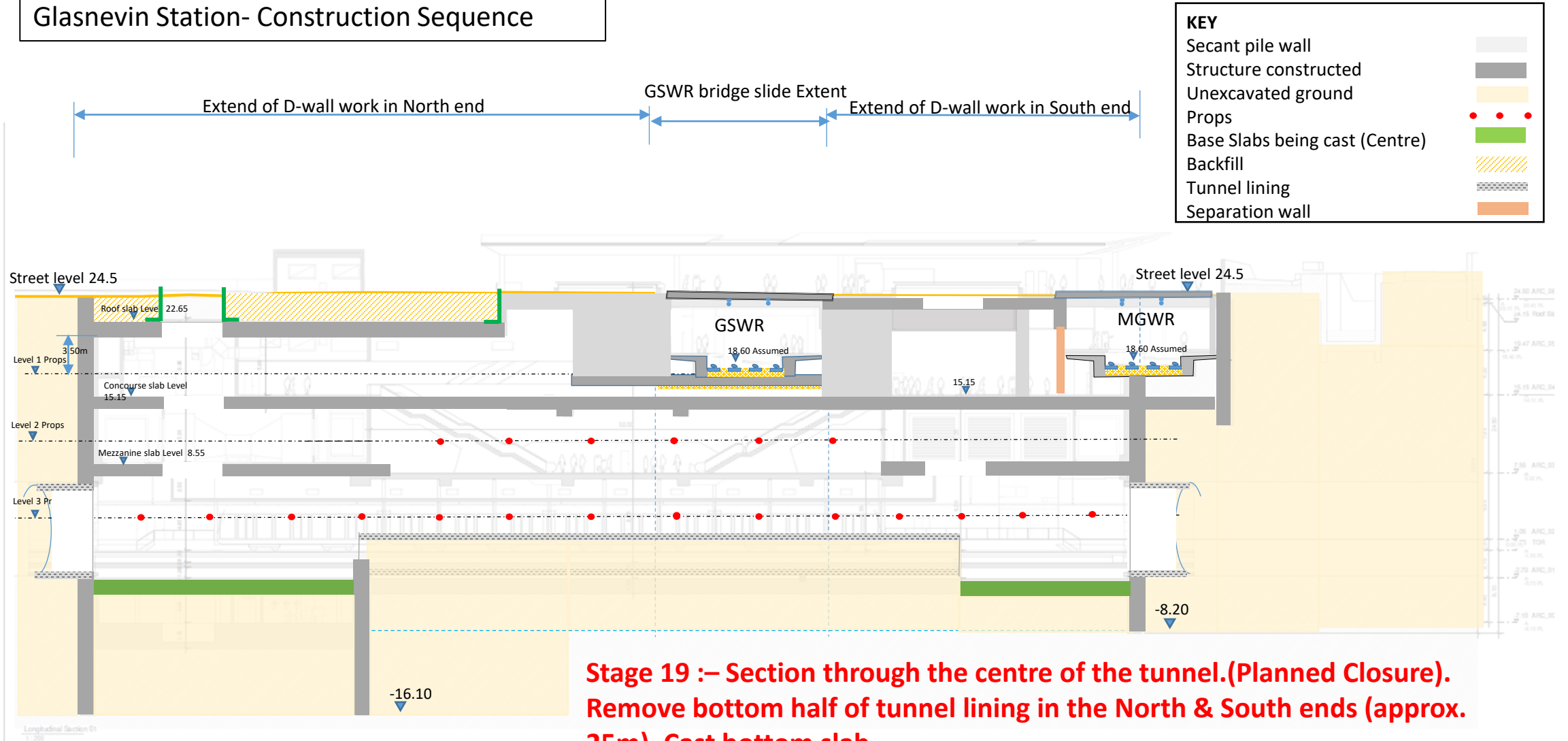
## Glasnevin Station- Construction Sequence







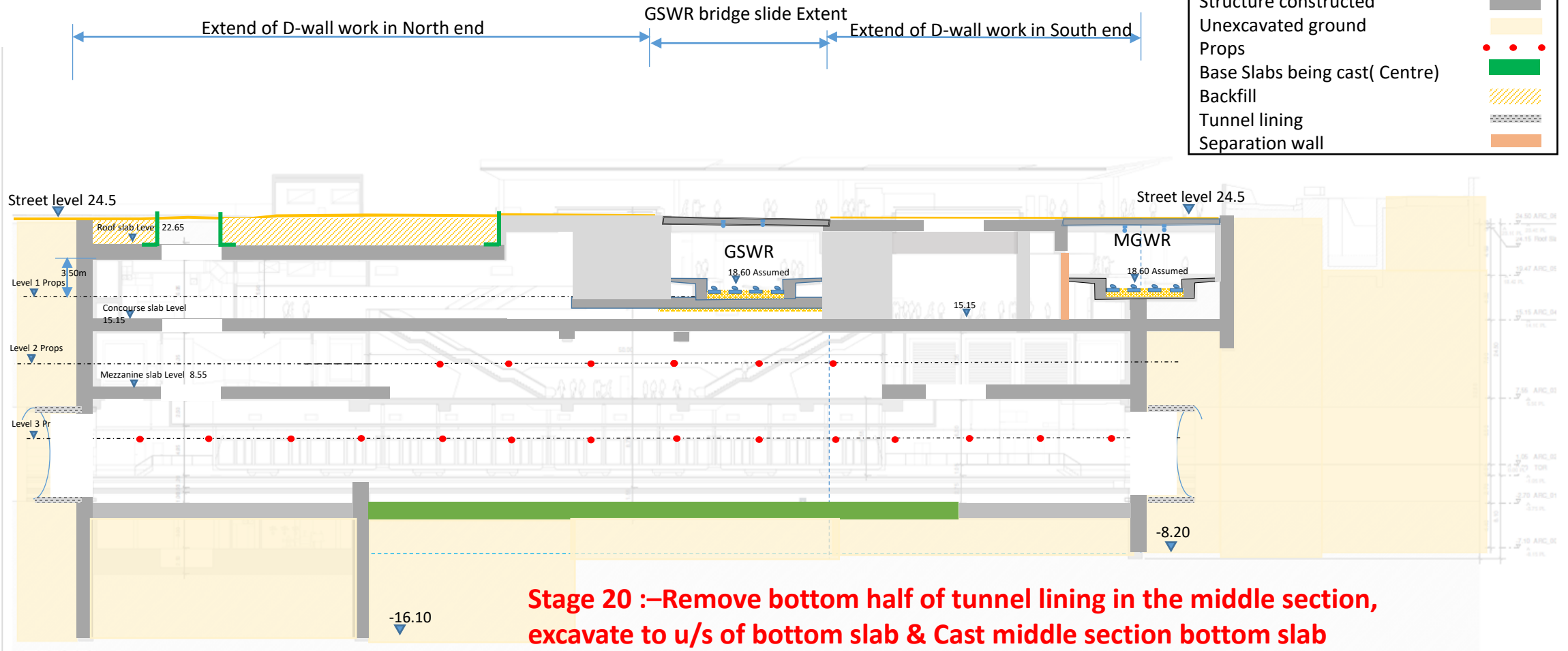
## Glasnevin Station- Construction Sequence



**Stage 19 :- Section through the centre of the tunnel.(Planned Closure).  
Remove bottom half of tunnel lining in the North & South ends (approx.  
25m), Cast bottom slab  
Rearrange ventilation/muck conveyor and divert MVH one side**

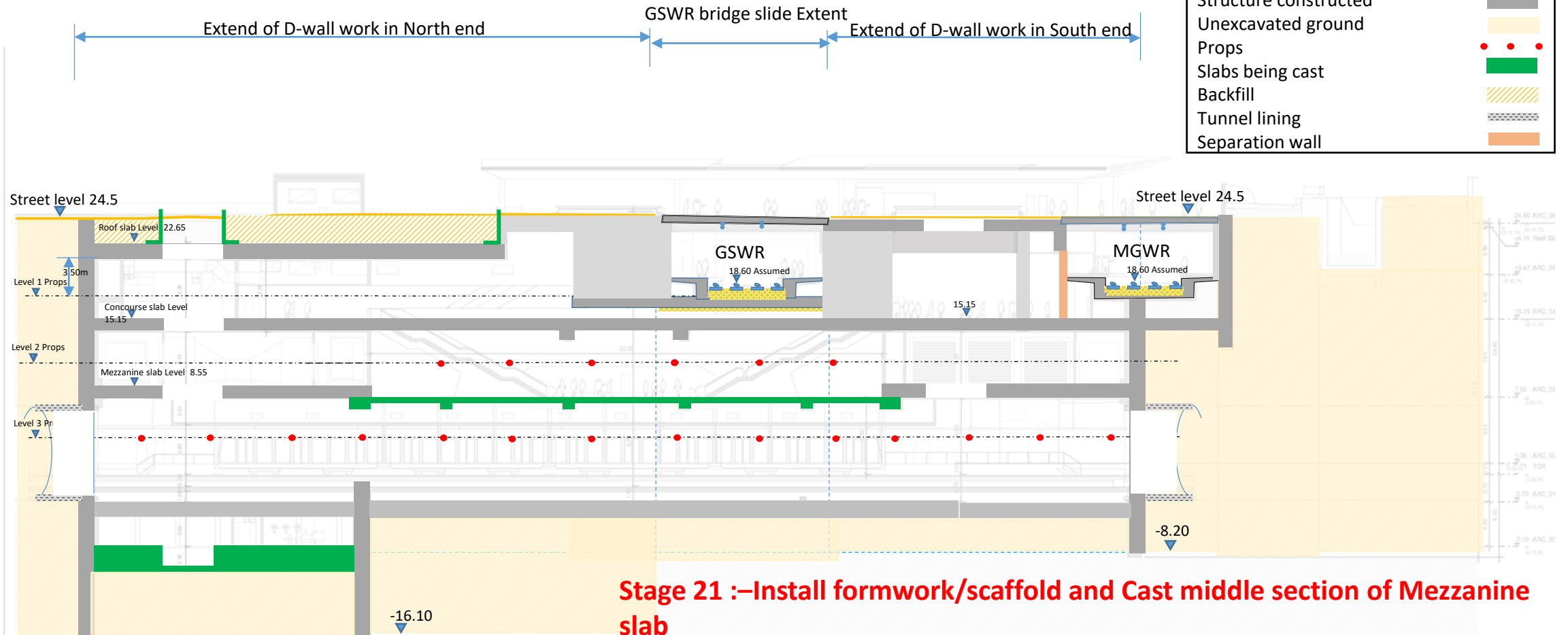


## Glasnevin Station- Construction Sequence





## Glasnevin Station- Construction Sequence



**Stage 21 :—Install formwork/scaffold and Cast middle section of Mezzanine slab**

- Excavate to formation level of sump/pump room & cast sump bottom slab**





# METROLINK

 [info@metrolink.ie](mailto:info@metrolink.ie)

 [www.metrolink.ie](http://www.metrolink.ie)

 1800 333 777

 @metrolink\_ie